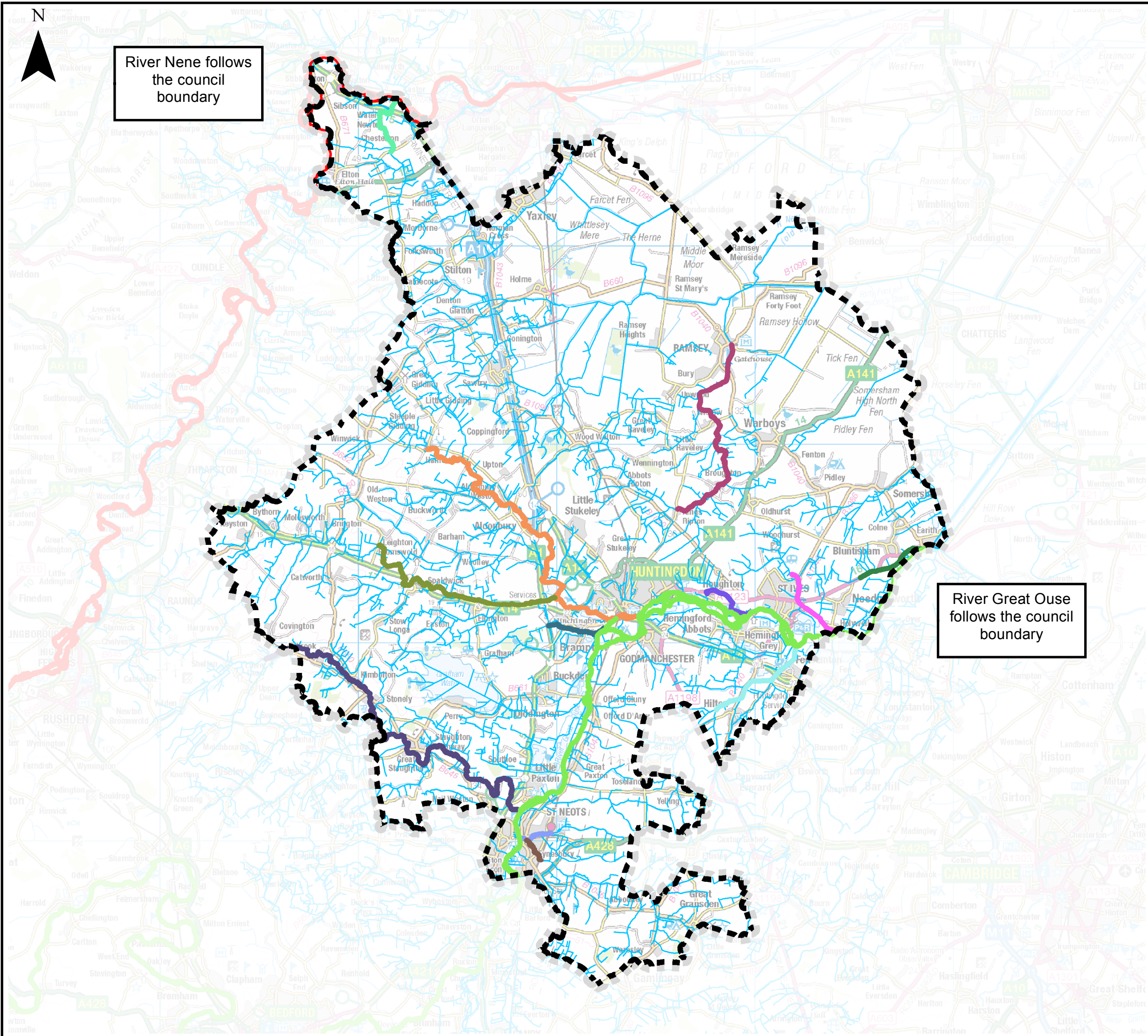




River Nene follows the council boundary



River Great Ouse follows the council boundary

Key Plan



Legend

- Huntingdonshire District boundary
- Alconbury Brook
- Back Brook, Houghton
- Billing Brook (Peterborough)
- Brampton Brook
- Bury Brook
- Ellington Brook
- Fox Brook
- Hall Green Brook
- Hen Brook
- Parsons Drive Drain
- River Great Ouse and Backwaters
- River Kym / Till
- River Nene Dog-In-A-Doublet to Northampton
- Wadsbys Folly
- Ordinary and Awarded watercourses



REF	Date	Comments
A	Aug 2016	Draft
B	Jan 2017	Final
C		

Reproduced from Ordnance Survey mapping with the permission of Ordnance Survey on behalf of the Controller of Her Majesty's Stationary Office. © Crown copyright and database rights 2017.

HUNTINGDONSHIRE DISTRICT COUNCIL SFRA APPENDIX B.1 MAIN RIVERS

This document is the property of Jeremy Benn Associates Ltd. It shall not be reproduced in whole or in part, nor disclosed to a third party, without the permission of Jeremy Benn Associates Ltd.

