

Huntingdonshire District Council and its partners are working to deliver an ambitious **£16.3 million** investment in **St Neots Town Centre**.



By investing strategically in your town's High Street, we will:

Strengthen
increasing demand by creating places for more people to live and work near the town centre.

Attract
create more reasons for people to visit the town centre.

Retain
improving the look and feel of the town centre, encouraging more people to visit and spend time in St Neots.

Connect
make it easier to get to and get around the town.



WHAT THIS EVENT IS ABOUT

Investment is made up of six projects:

- 1 Pedestrian & cycling improvements
- 2 Priory Quarter Redevelopment
- 3 St Neots High Street improvements
- 4 Old Falcon Inn Regeneration
- 5 A new Waterfront Route
- 6 Market Square improvements

Today we are focusing on the three projects that will revitalise the core of the town centre.

- St Neots Bridge
- The Market Square
- The High Street

These projects will:

Create a hub for events and activities where people can come together.

Enhance the environment, making the town a place where people want to spend their time.

Improve the town centre for people to travel to and around it on foot or by bike.

Invest in infrastructure to **support** local businesses **to grow and develop.**



THE WORK TO DATE

In December 2020 the Government confirmed £3.7 million of Future High Street Funding for St Neots. This money along with funding from Huntingdonshire District Council and the Cambridgeshire and Peterborough Combined Authority is being used to revitalise your High Street.

Turning project ideas into project reality takes time, in the period since the funding announcement we have been:

- **Identifying partners who can help us develop the projects.**
- **Undertaking site investigations to inform the design process.**
- **Exploring the constraints and opportunities of each of the projects.**
- **Making sure the projects deliver value for money.**
- **Listening to local people.**
- **Developing options for consideration.**
- **Costing and reality checking proposals taking into account rising prices.**
- **Checking that the projects will deliver against the FHSF outcomes.**
- **Collaborating with stakeholders.**

The options we are presenting to you today have been developed from engagement, evidence, and policy.

These are the options that can feasibly be delivered within the timescales. More importantly these are the options that will improve and enhance the town for the benefit of the people who live, work, and visit St Neots.

These are options, they are not yet the final designs and more work will need to be done to develop them.

Please take some time to view the proposals, talk to our team and leave your comments and feedback.



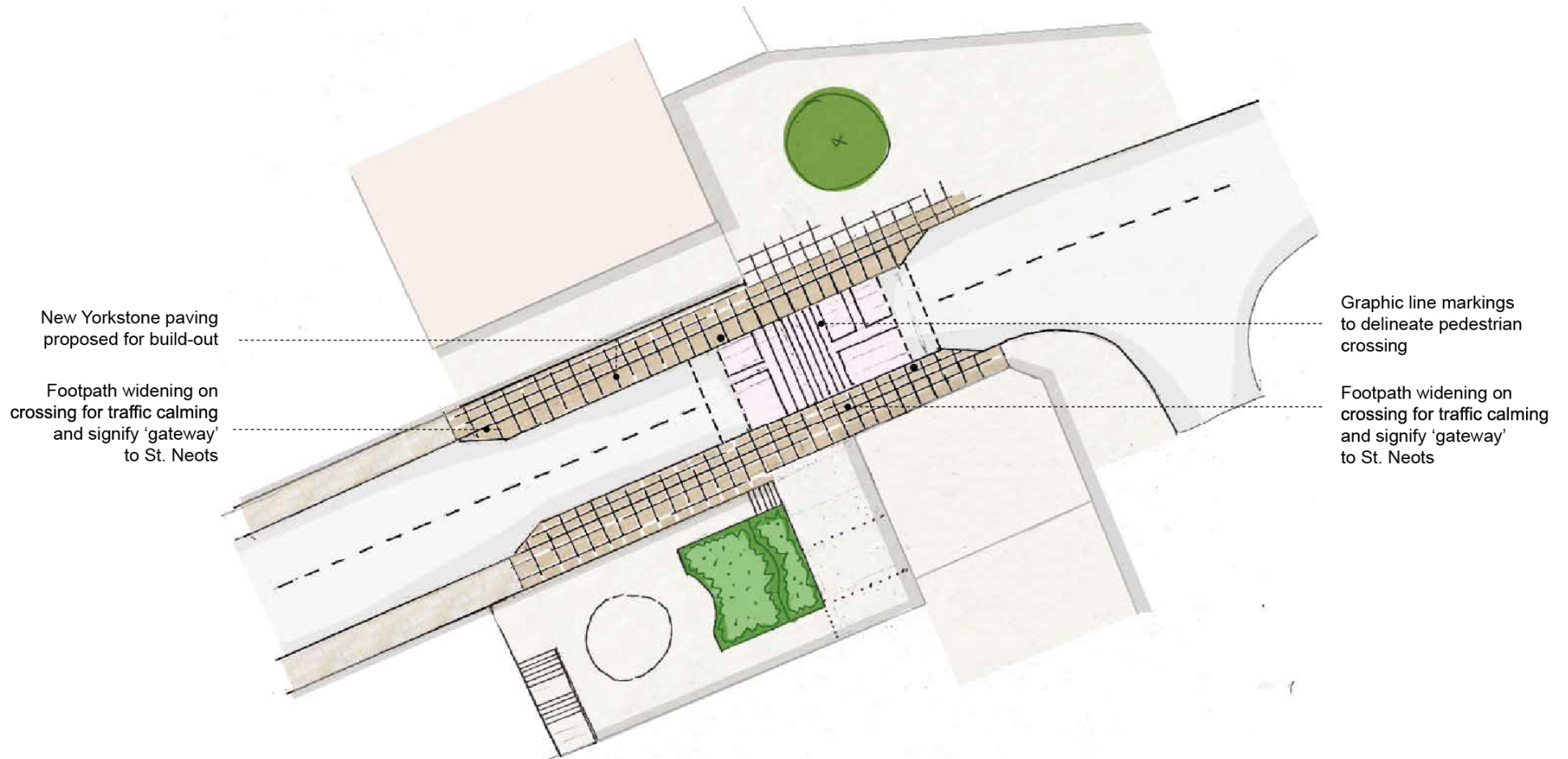
THANK YOU



ST NEOTS BRIDGE AND GATEWAY

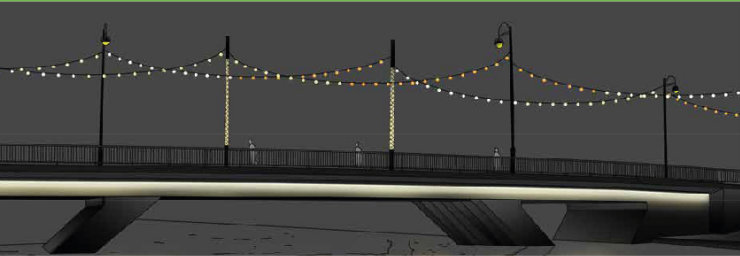
We want to improve the point where the Bridge enters the town for all users. To do this we will invest in improving footpaths, the crossing and the surrounding public realm.

What do you think? Add your notes and comments here.



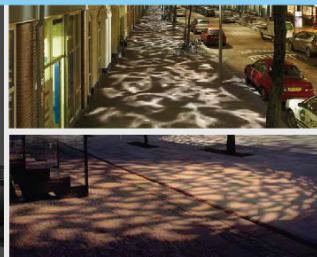
ST NEOTS BRIDGE LIGHTING

Lighting can be used to give the bridge a distinct look and create a sense of arrival. We are considering a range of options.



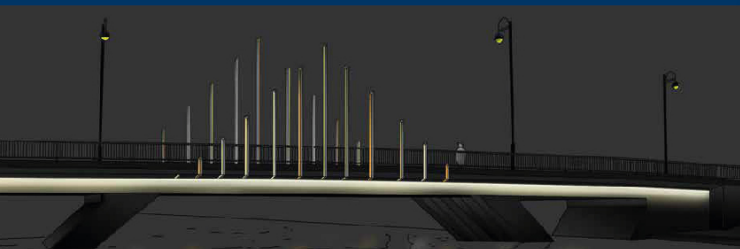
OPTION 1

Festoon lighting upon main bridge deck suspended between existing lighting columns to frame views of the river from bridge.



OPTION 2

Using the bridge as a canvas to create a textured light effect upon the bridge to provide a visually pleasing view from the river.



OPTION 3

Vertical luminaires, triangular in shape create a central focal point to the bridge. Each vertical profile offers an interesting dynamic both on and away from the bridge.

WHAT ST NEOTS BRIDGE COULD LOOK LIKE...

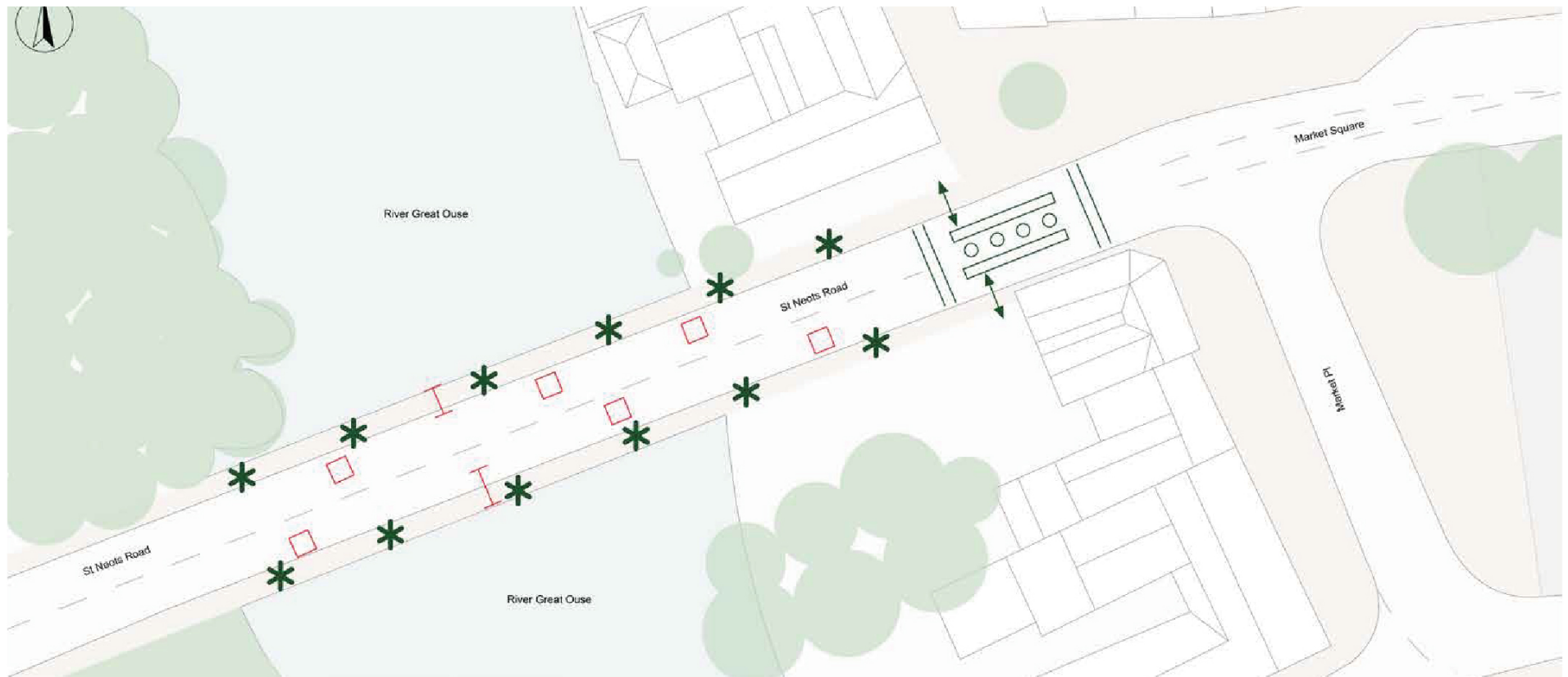


ST NEOTS BRIDGE: CONSIDERATIONS & OPPORTUNITIES


Whether you are on foot or a vehicle the St Neots Bridge is a key route into the Town. It is an important point of welcome and arrival.



As shown on this plan thinking about the Bridge means thinking about the range of users, crossing points and lighting.


Is there anything we've missed? Pick up a post it note and add your consideration to the plan.





Considerations & Opportunities

-  Bridge deck width and bus carriageway requirements restrict footway widening

 Service covers obstruct possible relocation of footway kerb
-  Increased crossing size

 Footway build-out

 Stylized crossing

 Lighting feature on bridge

WHAT YOUR MARKET SQUARE COULD LOOK LIKE...



WHAT IT COULD LOOK LIKE ON EVENT DAYS

Bringing the Community Together

- Both options include relocated seating which can be moved, creating an open space for markets and other events and activities.

What do you think? Add your notes and comments here.



ST NEOTS MARKET SQUARE WITHOUT DISABLED PARKING

Option A.

Estimated Cost: £4,721,550

- Enhancing the existing Market Square and creating a flexible multi use space which can host the market and events. Café culture will be at the heart of the town. Seating can be moved to accommodate a range of activities and enable local people to come together in a public space. This option removes disabled parking which would be relocated to insert here.

What do you think? Add your notes and comments here.



ST NEOTS MARKET SQUARE WITH DISABLED PARKING

Option B.

Estimated Cost: £4,721,550

- This option reduces the size of the Market Square to retain 8 disabled parking spaces in the centre of the town.

What do you think? Add your notes and comments here.



THE MARKET SQUARE: THE OPPORTUNITIES

Investing in the Market Square will deliver a range of benefits for the town. This diagram shows tangible outcomes change can deliver.



Opportunities



Bus stops relocated to east of high street



Stage/ event space



Parking removed to create flexible market/ public space



Opportunities for greening



Rainwater from roofs & paving to feed into rain gardens



Footpath widening to improve pedestrian flow and encourage spill out



Historical features enhanced



Removal of trees can improve pedestrian flow



Declutter by removing gaurdrails

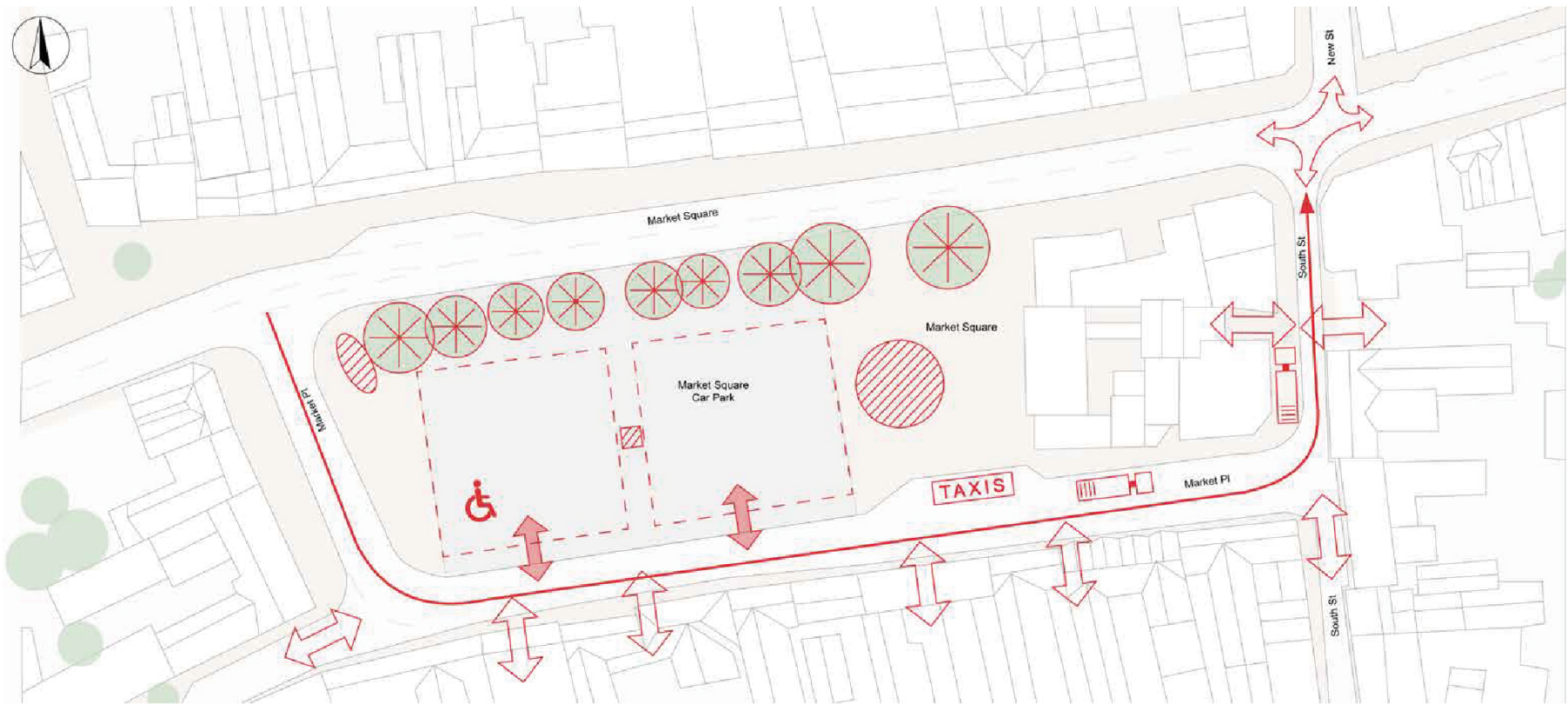


Opportunity for raised table at junction


THE MARKET SQUARE: CONSIDERATIONS


The Market Square needs to work for a range of uses including the market itself, events, and the businesses around the Square. It needs to be a space where the community can come together. This diagram shows the elements the design team have taken into consideration.


Is there anything we've missed? Pick up a post it note and add your consideration to the plan.





Considerations


 Access to be retained with link to high street


 Tree life expectancy short therefore unsafe

 Key historical features to be retained and protected


 Capacity for markets to be retained

 Loading to be facilitated

 Taxi drop off/ pick up

 Disabled parking facilities

 Large vehicle access required

 Limited junction alterations due to large vehicle turning movements

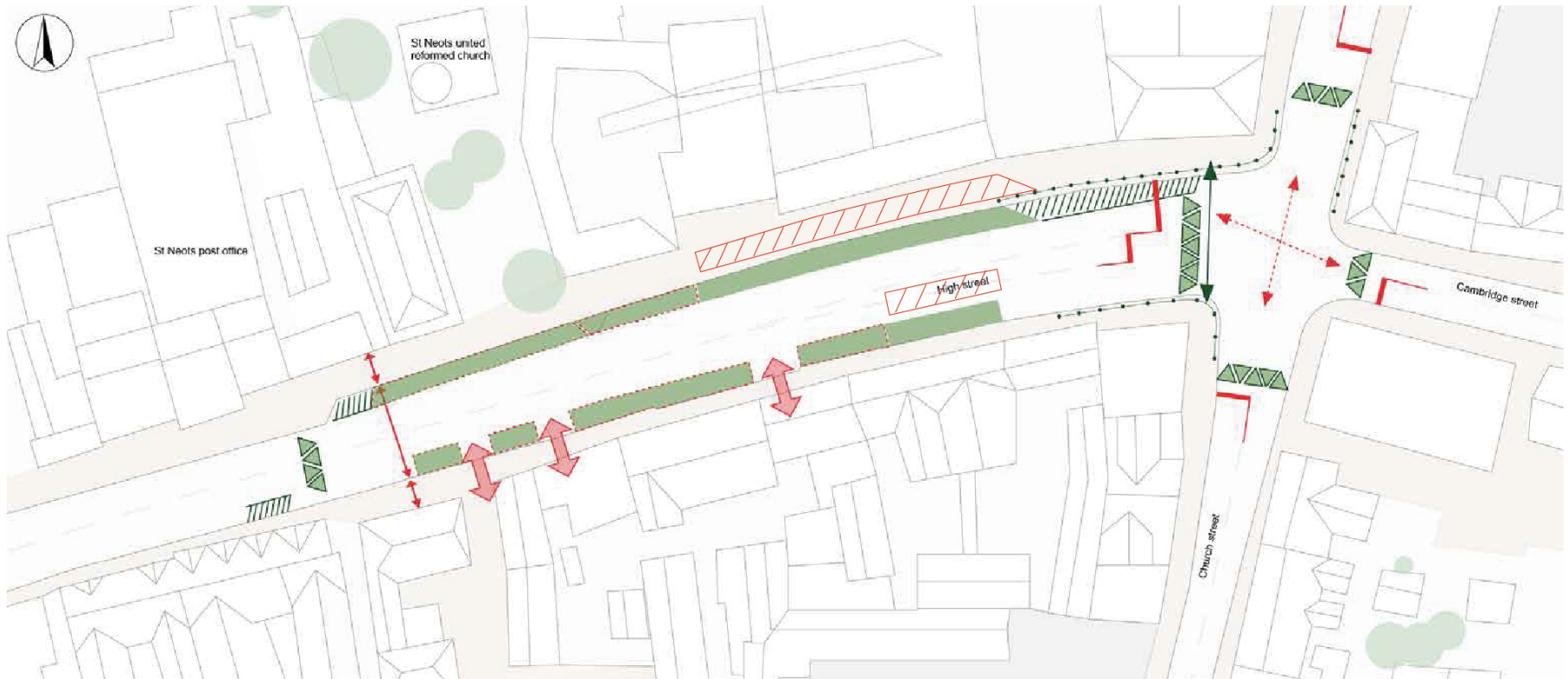
WHAT YOUR HIGH STREET COULD LOOK LIKE...













THE HIGH STREET: CONSIDERATIONS AND OPPORTUNITIES

The High Street is the spine of the town centre. It is an important route for pedestrians, cyclists, buses, and other vehicles. When thinking about proposals for the future we must take into consideration a range of factors as shown on this plan.

Is there anything we've missed? Pick up a post it note and add your consideration to the plan.



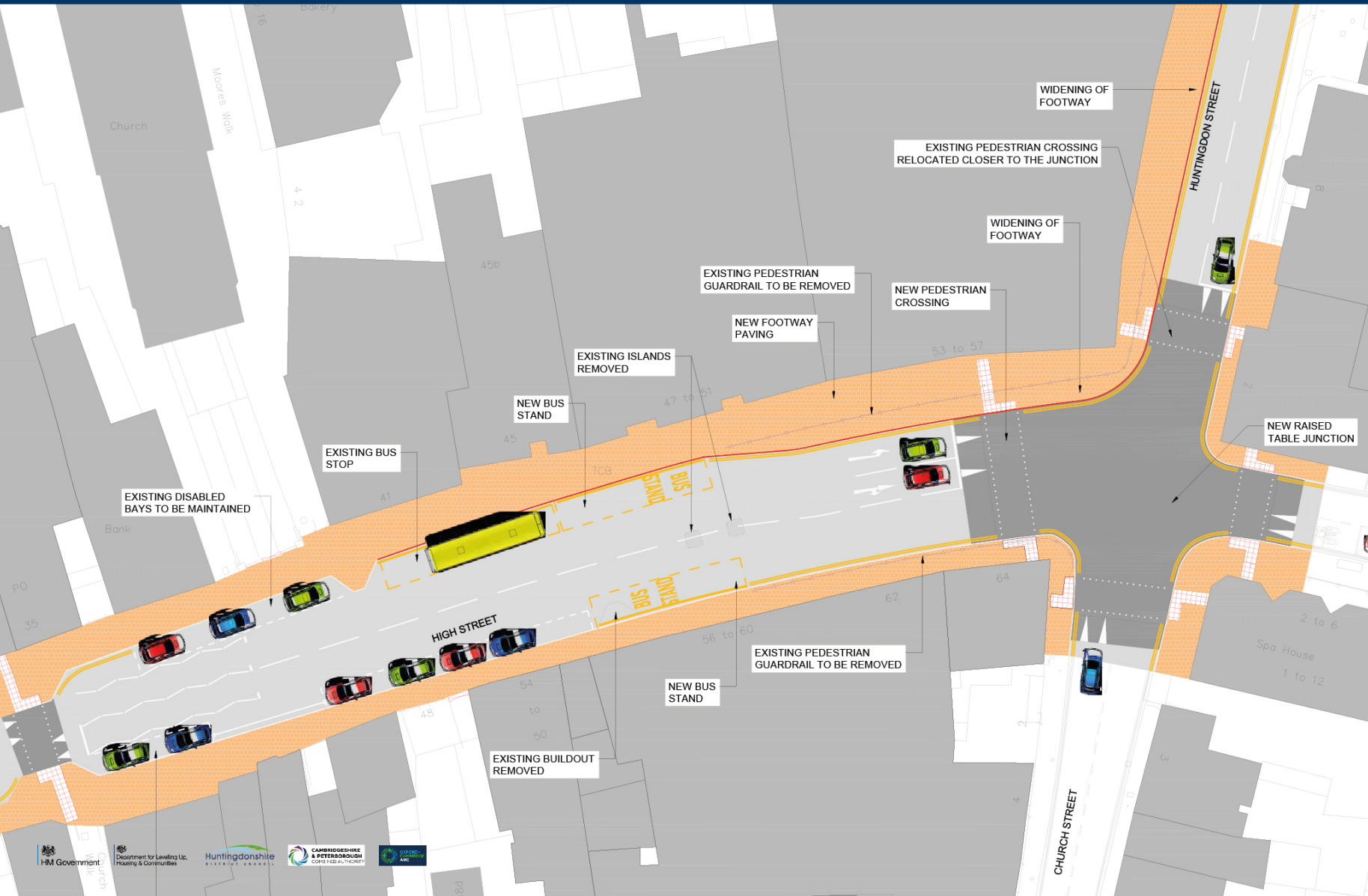
Considerations & Opportunities

-  Stop lines fix due to swept paths
-  Footway and carriageway fixed widths
-  Heavy traffic flow limits amendments to junctions
-  Access to be retained
-  Bus stand retained
-  New crossing
-  Stylised crossing to improve sense of place
-  Footway widening for planting
-  Remove guardrails to increase space and enhance pedestrian flows
-  wider footway, planting or dual use parking/ loading bays

THE HIGH STREET: OPTION 1

Option 1 improves pathways and crossing places for pedestrians. Relocating the bus stop from Market Square to the Eastern End of the High Street. All existing parking and loading bays are retained.

Estimated Cost: £2,867,706

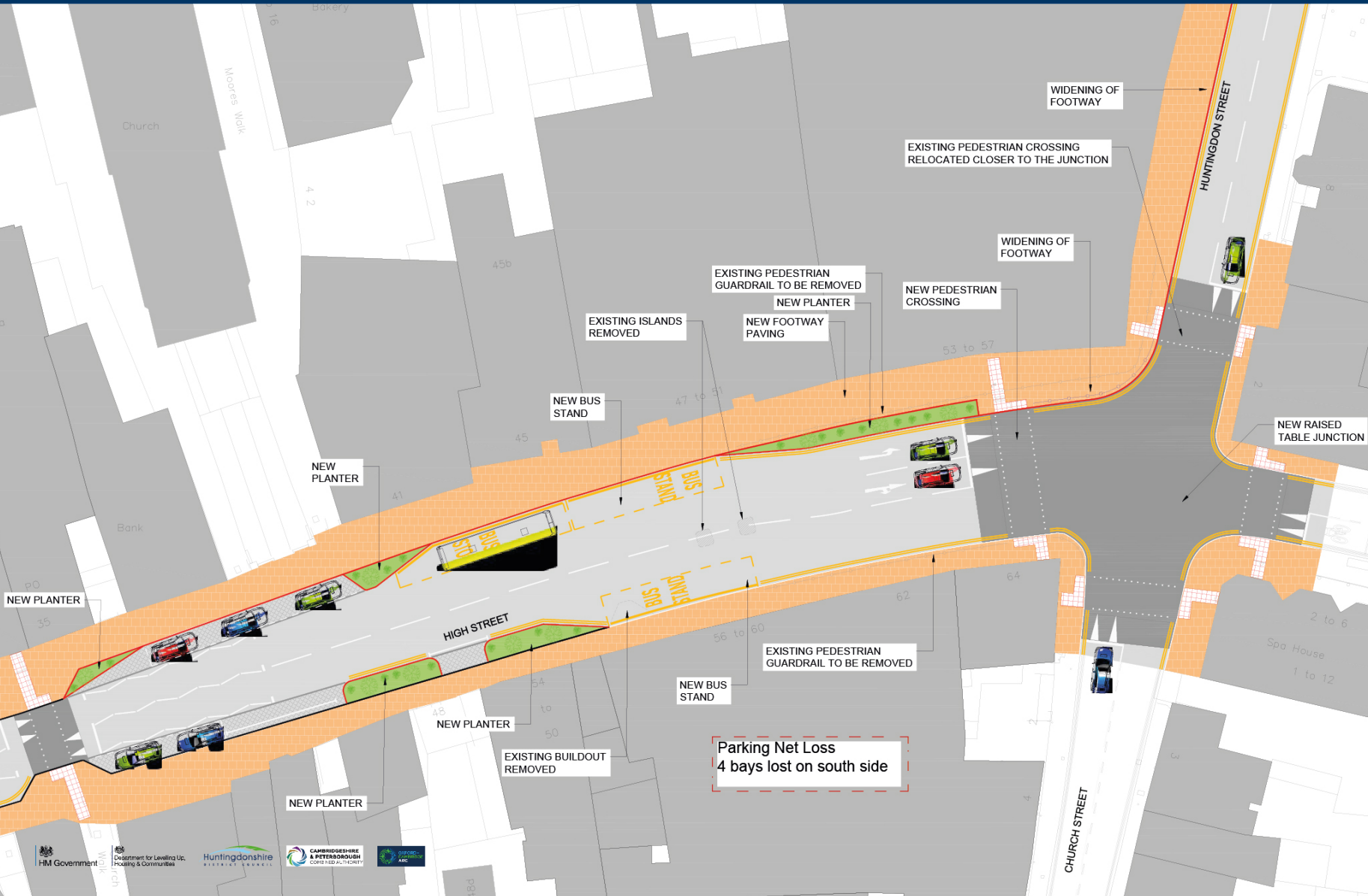


What do you think?
Add your notes and
comments here.

THE HIGH STREET: OPTION 2

Option 2 greens the High Street, makes it easier for pedestrians to get around and improves provision for busses. Adding trees and planting results in the loss of 4 parking bays on the south side. As with option 1 bus stops are relocated taking bus passengers to the heart of High Street.

Estimated Cost: £3,308,290

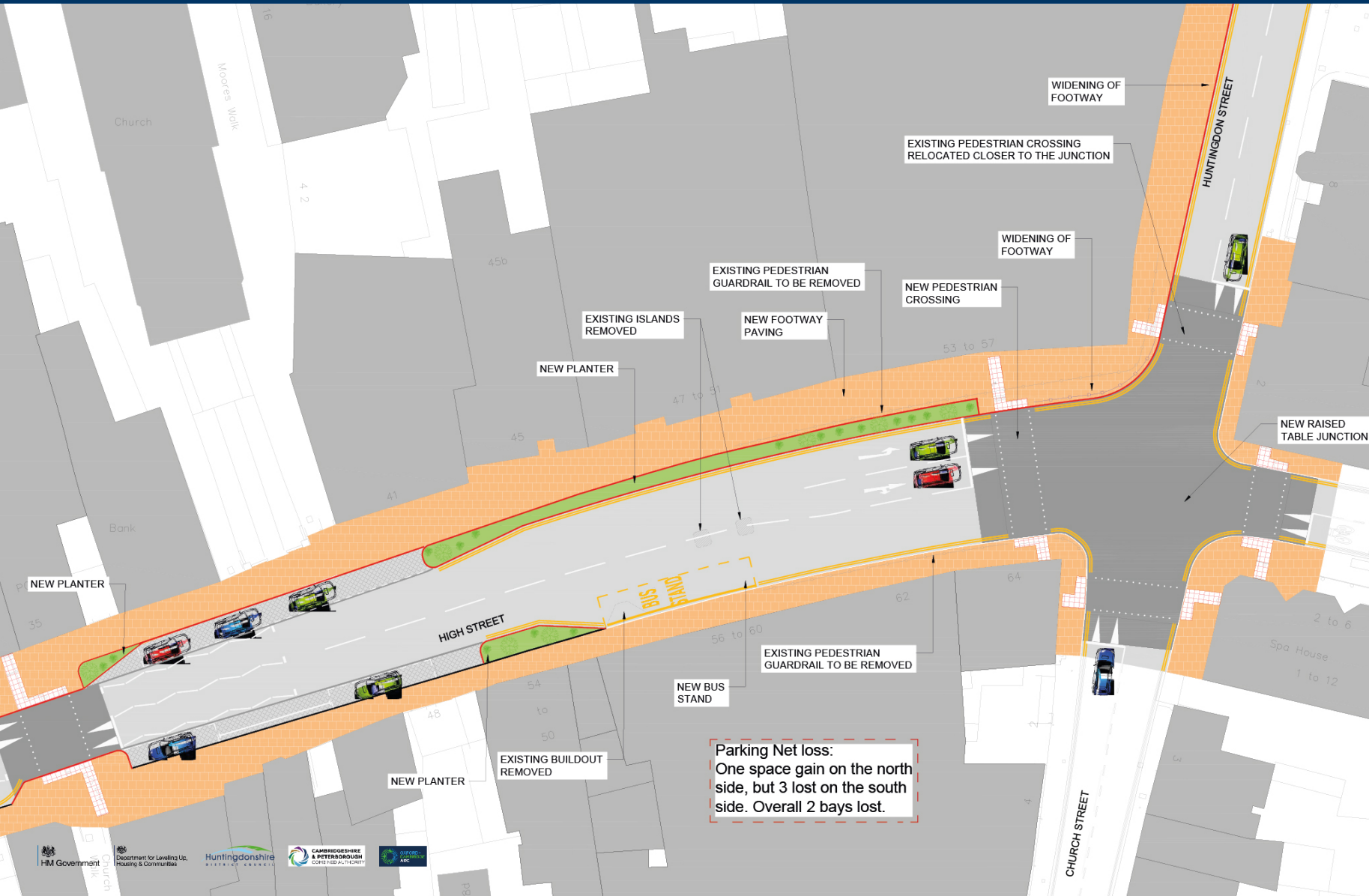


What do you think?
Add your notes and
comments here.

THE HIGH STREET: OPTION 3

Option 3 improves the look and feel of the High Street by making it greener. Pavements and crossing are improved. One additional parking space is created on the north side, but 3 are removed on the south. Bus stops are relocated to Tebbutts Road.

Estimated Cost: £3,206,658

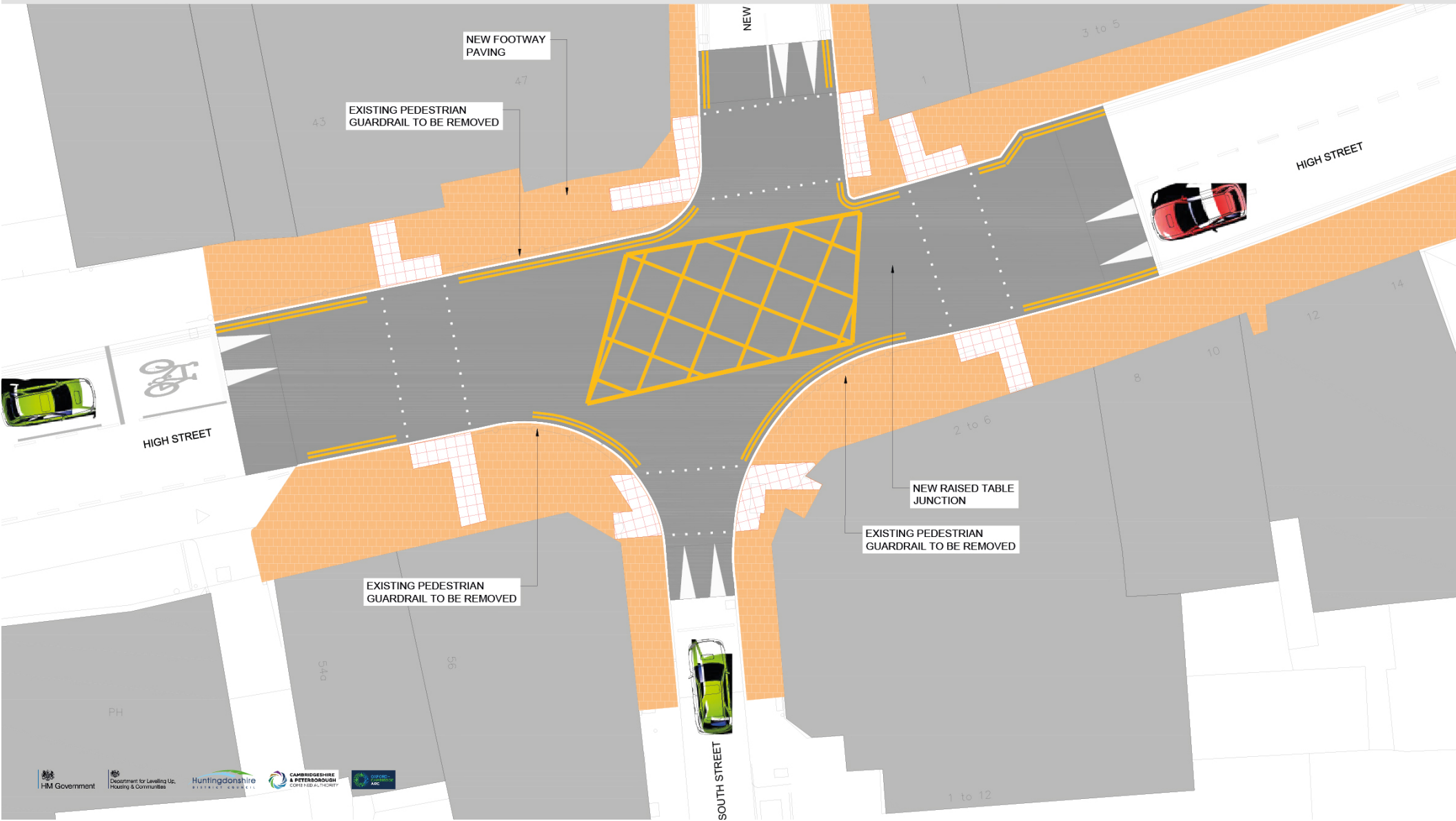


What do you think?
Add your notes and
comments here.

SOUTH STREET

The junction by Waterstones and Yorkshire Building society is a busy part of the town which can often feel cramped and cluttered for pedestrians. Improving the footpaths, removing guard rails and adding a raised table junction will open up the space and make it work better for those on foot, on a bike or in car or van.

What do you think? Add your notes and comments here.



QUESTIONS AND COMMENTS

Do you have anything else you want to tell us? Any questions for the project team?

Put them on a postcard and add them to the comment box. Questions will be replied to through the FAQ section of our website.



Want to join our mailing list?

- VISIT [HUNTINGDONSHIRE.GOV.UK/FHSF](https://www.huntingdonshire.gov.uk/fhsf)
- SCAN THE QR CODE.



A TIME FOR THE FUTURE OF ST NEOTS HIGH STREET

